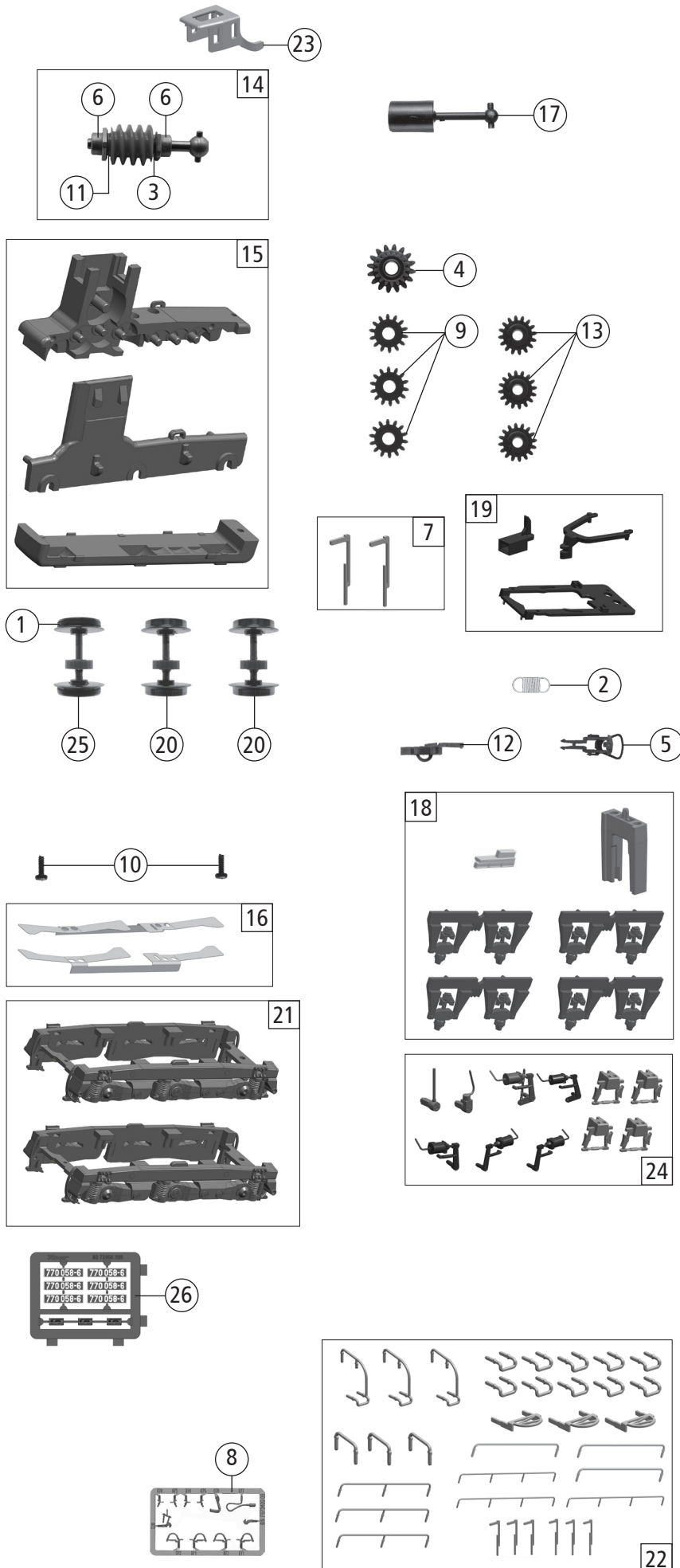


| 72964 | | ZSSK-Cargo | Hummel | = | |
|---------------------|---|---------------------|------------------------------|---|---|
| 72965 | | | | = | 🔊 |
| Pos. Nr. Pos.no. | Beschreibung Description | Art.-Nr. Art.no. | Preisgruppe Price bracket | | |
| 1 | Gehäuse kpl. Betr. Nr. 770 058-6 Body ass. compl. Loco no. 770 058-6 | 147959 | 28 | | |
| 2 | GF-Schraube M1,6x4 mm GF-Screw | 114850 | 3 | | |
| 3 | SK-Schraube M1,6x4 mm SK-Screw | 115161 | 3 | | |
| 4 | Kontaktfeder D=2,4x11,6 mm Contact spring D=2,4x11,6 mm | 116876 | 3 | | |
| 5 | Puffer RE Buffer RI | 136874 | 3 | | |
| 6 | Brückenstecker - Plux16 Jumper | 133241 | 10 | | |
| 7 | Führerstand Drivers cab | 136190 | 5 | | |
| 8 | Motor Motor | 136206 | 28 | | |
| 9 | Motorkontaktfeder Motor contact spring | 136207 | 6 | | |
| 10 | TS - Fenster u. Lichtleiter Part set - windows and light guide | 136225 | 8 | | |
| 11 | TS - LED-Maske Part set - LED-mask | 136861 | 4 | | |
| 12 | Tank lackiert / bedruckt Tank coated/marked | 147956 | 6 | | |
| 13 | Schürze bedruckt Apron marked | 142651 | 6 | | |
| 14 | Grundrahmen Main frame | 136867 | 17 | | |
| 15 | Platine komplett mit LED-Platine Printed circuit ass. with LED-printed circuit | 136309 | 29 | | |
| 16 | TS - Handlauf lackiert Part set - handrail coated | 136878 | 22 | | |
| 17 | Kette Chain | 138531 | 6 | | |
| 18 | Dachabdeckung Roof cover | 136210 | 3 | | |
| 19 | Schraube M2x6 mm Screw | 85672 | 3 | | |
| 20 | TS - Gehäuse lackiert Part set - body coated | 136223 | 12 | | |
| 21 | Kabine Cabin | 147960 | 18 | | |
| 22 | Frontlicht Front light | 136317 | 5 | | |
| 23 | Frontlichthalter Front light holder | 136880 | 4 | | |
| 24 | Fahrwerksrahmen Chassis frame | 147955 | 22 | | |
| 25 | Puffer LI Buffer LE | 136875 | 3 | | |
| 26 | Griffstange Niro Hand rail Niro | 147958 | 5 | | |
| 27 | Kardanschale kurz Cardan reception short | 87129 | 4 | | |
| Sound | | | | | |
| 28 | Sound-Steckdecoder - 22Plux Sounddecoder | 129000 | 39 | | |
| 29 | Lautsprecher Loud speaker | 129524 | 13 | | |
| 30 | Lautsprecherbox Loud speaker box | 136228 | 5 | | |

Änderungen in Konstruktion und Ausführung vorbehalten
We reserve the right to change the construction and specification



| 72964 | | ZSSK-Cargo | Hummel | = | |
|---------------------|--|---------------------|------------------------------|---|---|
| 72965 | | | | = | 🔊 |
| Pos. Nr. Pos.no. | Beschreibung Description | Art.-Nr. Art.no. | Preisgruppe Price bracket | | |
| 1 | Hafringsatz 10Stk. 10,3-12,4mm Set with traction tyres 10pcs. 10,3-12,4mm | 40074 | --- | | |
| 2 | Zugfeder - 2,5x5,8x0,15mm Spring - 2,5x5,8x0,15mm | 86208 | 3 | | |
| 3 | Beilagescheibe Washer | 86108 | 3 | | |
| 4 | Schneckenzahnrad doppelt Worm gear twice | 86419 | 6 | | |
| 5 | Standardkupplung komplett Standard coupling assembly | 89246 | 6 | | |
| 6 | Lager für Schneckenachse Bearing for wormaxle | 89749 | 6 | | |
| 7 | Scheibenwischer Wipers | 142664 | 5 | | |
| 8 | TS - Bremsschläuche + Zughaken Part set of brake tubes & coupling hooks | 139832 | 7 | | |
| 9 | Zahnrad Z=14 Gearwheel | 111115 | 3 | | |
| 10 | GF-Schraube M1,6x5 mm GF-Screw | 115269 | 3 | | |
| 11 | Anlaufscheibe D=2,1/4 H=0,01 Washer | 114622 | 3 | | |
| 12 | Kurzkupplung - Vorentkupplung Short coupler | 115550 | 6 | | |
| 13 | Zahnrad Z=16 Gearwheel | 117617 | 3 | | |
| 14 | Schneckensatz mit Kardankugel Worm set with cardan ball | 136196 | 13 | | |
| 15 | Getriebebesatz 2tlg Gear bottom 2 parts set | 142654 | 19 | | |
| 16 | Radkontakt 1 und 2 Wheel contact 1 and 2 | 136204 | 10 | | |
| 17 | Kardanwelle Cardan shaft | 100260 | 4 | | |
| 18 | Dämpfer, Federaufn. Damper, ... | 136864 | 3 | | |
| 19 | TS - Kinematik Part set - Kinematics | 136866 | 5 | | |
| 20 | Radsatz mit Zahnrad ohne Hafring Wheelset with gear without traction tire | 136868 | 12 | | |
| 21 | Drehgestell 1 und 2 Bogie 1 and 2 | 147957 | 8 | | |
| 22 | Zurüstbeutel Bag with accessories | 136882 | 31 | | |
| 23 | Schneckendeckel Worm cover | 136871 | 4 | | |
| 24 | TS - Fahrgestell Part set - chassis | 136872 | 7 | | |
| 25 | Radsatz m.2Hafttr/mit Zahnrad Wheelset with 2 traction tires/with gear | 136873 | 13 | | |
| 26 | Tafelsatz Set of panels | 147962 | 12 | | |